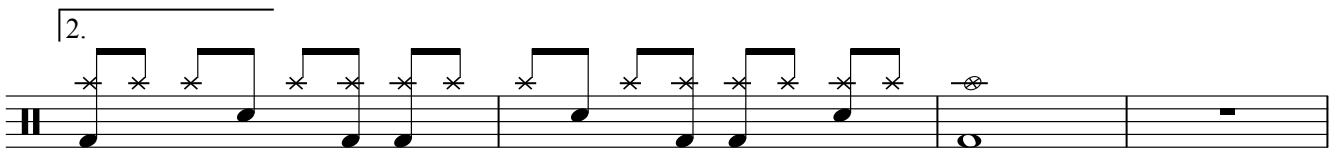
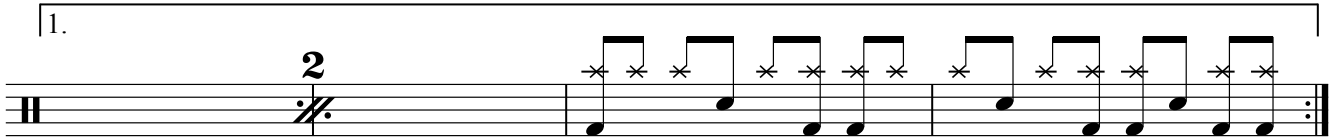
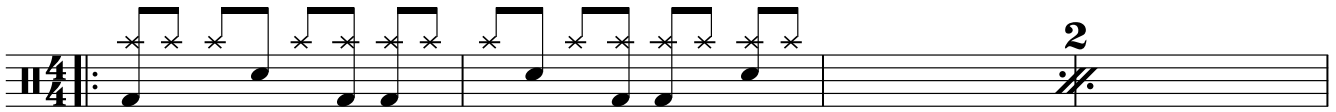


USE SOMEBODY

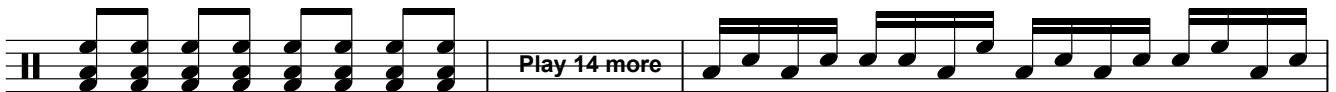
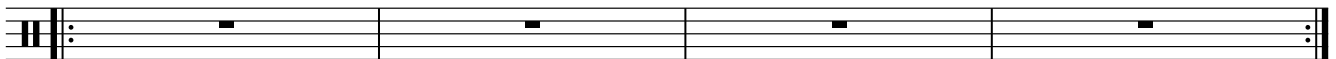
KINGS OF LEON

♩ = 140 INTRO

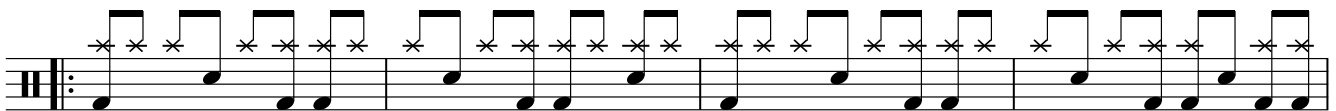


VERSE

4X



CHORUS



VERSE



2 USE SOMEBODY

First staff of music for '2 USE SOMEBODY'. It features a series of eighth notes with 'x' marks above them, indicating a specific drum pattern. The staff begins with a double bar line and a key signature of one sharp (F#).

Second staff of music for '2 USE SOMEBODY'. It features a series of eighth notes with 'x' marks above them, indicating a specific drum pattern. The staff begins with a double bar line and a key signature of one sharp (F#). The text 'Play 5 more' is written above the staff.

CHORUS

First staff of music for the CHORUS. It features a series of eighth notes with 'x' marks above them, indicating a specific drum pattern. The staff begins with a double bar line and a key signature of one sharp (F#). The text 'CHORUS' is written above the staff.

Second staff of music for the CHORUS. It features a series of eighth notes with 'x' marks above them, indicating a specific drum pattern. The staff begins with a double bar line and a key signature of one sharp (F#).

BRIDGE

First staff of music for the BRIDGE. It features a series of eighth notes with 'x' marks above them, indicating a specific drum pattern. The staff begins with a double bar line and a key signature of one sharp (F#).

Second staff of music for the BRIDGE. It features a series of eighth notes with 'x' marks above them, indicating a specific drum pattern. The staff begins with a double bar line and a key signature of one sharp (F#).

OUTRO

First staff of music for the OUTRO. It features a series of eighth notes with 'x' marks above them, indicating a specific drum pattern. The staff begins with a double bar line and a key signature of one sharp (F#). The text 'OUTRO' is written above the staff.

Second staff of music for the OUTRO. It features a series of eighth notes with 'x' marks above them, indicating a specific drum pattern. The staff begins with a double bar line and a key signature of one sharp (F#).

Fine